



The  
**RED TIE**  
Event

**DRESS YOUR HERD**  
*for success*

**NOVEMBER 4, 2023**  
**3C EVENT CENTER & AGRI COMPLEX**  
**HALE, MISSOURI – 1:00PM**

**3C EVENT CENTER**  
**10572 HWY 65**  
**HALE, MO 64643**

**SALE DAY PHONES**

Dwight Harper.....660.542.4033  
Randy Meyer.....660.788.2066

**SALE STAFF**

Kyle Gilchrist.....641.919.1077  
Josh Taylor.....918.605.5139

**RED ANGUS REPRESENTATIVE**

Harold Bertz.....816.661.2289

**VETERINARIAN**

DR. Todd Gordon, DVM.....660-258.3308

**ACCOMMODATIONS**

Comfort Inn & Suites.....660.646.9900  
Fairfield Inn & Suites.....660.646.3100

**SCHEDULE OF EVENTS**

Friday, November 3

View Cattle.....1:00-6:00 p.m.

Saturday, November 4

View Cattle.....8:00 a.m.-12:00 p.m.

Lunch.....11:00 a.m.

Red Tie Event.....1:00 p.m.

**CATALOG BY**

Dusk to Dawn Marketing

Makayla Reynolds.....660.676.9882

*The Red Tie Event*

**NOVEMBER 4, 2023**

**AT 1:00 P.M.**

Hello and welcome to our seventh "RED TIE EVENT." We are a group of Red Angus breeders who love our red cattle and value what we can bring to you, our customer. The "TIE" that bonds our group is respect, dependability, and a focus on our customer's needs. We provide you a spectrum of bloodlines that perform well, both in the fescue belt and beyond. We believe in making good cattle great, and hand select our very best for you.

With profit margins pinched tight, quality animals still sell for above average prices. Now, more than ever, it is important to make an investment to raise your bottom line. Don't produce commodity cattle. Produce premium cattle. We want to help you by providing valuable genetics as well as marketing options.

Quality Red Angus replacement females have been selling higher their black hided counterparts for the last ten years. More and more cattlemen are using Red Angus and Missouri is one of the fastest growing state in the Red Angus numbers. Invest in a "RED TIE Ready" animal today and dress your herd for success.

**WATCH OR BID ONLINE**

**DVAuction**  
*Broadcasting Real-Time Auctions*

Visit [www.DVAuction.com](http://www.DVAuction.com)  
and Register Today!

For General Questions Please Contact Our Office:  
(402) 316-5460 or [support@dvauction.com](mailto:support@dvauction.com)

**CAN'T MAKE THE SALE**  
**CALL JOSH TAYLOR**  
**FOR BIDDING OR TO TAKE A LOOK AT CATTLE**  
**918.605.5139**

## **THE RED TIE GROUP**

Brickhouse Farms LLC • Tina, MO  
Dwight Harper • 660.542.4033

Bar E Ranch • Haskell, OK  
Roger Erickson • 918.691.2702

Emerald Earth Cattle Co. • Platteville, WI  
Joe Jewison • 608.778.6736  
Gina Jewison • 608.778.6748

Hart Brothers • Brunswick, MO  
Brian Hart • 660.815.2222  
Lucas Hart • 660.414.5925

Mark Hatfield & Kyle Lynn • Salisbury, MO  
Mark Hatfield • 660-676-6030  
Kyle Lynn • 816.681.3614

Kluesner Family Cattle • Bloomington, WI  
Tony Kluesner • 608.379.3113.  
Bart Kluesner • 608.379.4136

Meyer Family Farm • Brunswick, MO  
Randy Meyer • 660.788.2066  
Steven Meyer Jr. • 660.998.3044

Mosby Cattle Co. • Silex, MO  
Brad Mosby • 636.262.5356

Twin Hill Stock Farm • Silex, MO  
Terry Mudd • 636.262.9428

## **TERMS**

Terms of the sale are cash, check or other terms agreed in writing between seller, buyer and sale manager payable immediately upon conclusion of the sale before animals will be moved. Sale Manager reserves the right to require a certified check as settlement before releasing any cattle. Buyer hereby grants to Seller/Manager a security interest in the livestock purchased to secure the payment of any of the purchase price, and buyer further authorizes Seller/Sale Manager to file any documents with any Secretary of State or other government entity necessary to perfect such security interest.

## **ANNOUNCEMENTS**

Any errors or changes in information contained in the catalog will be announced from the block and such announcements shall take precedence over the information contained here in.

## **PURCHASE'S RISK**

All animals are the owners risk prior to their sale and become property of the purchaser as soon as declared sold by the auctioneer.

## **BIDDING**

Any disputes or challenges regarding bids or two bids will be settled by the Auctioneer and the decision will be final.

## **CERTIFICATE OF REGISTRY**

A certificate of registry for each animal will be transferred to the buyer at the sellers expense.

## **HEALTH**

All Animals are eligible for interstate shipment. Interstate health papers prepared by an accredited veterinarian will be furnished on each animal sold. Arrangements for International Shipment should be made with the Sales Manager prior to the auction. All efforts for the exportation of cattle can be arranged through the Sale Manager.

## **BREEDING GUARANTEE**

All animals are guaranteed by the sellers as outlined in the Suggested Sale Terms of the Red Angus Association of America including but not limited to points 8 and 10.

## **LIABILITIES**

All persons who attend the sale do so at their own risk. The seller, auction facility and sale manager assume no liability for any accident that may occur. Neither does the seller, auction facility or sale manager assume liability for the loss or injury to livestock due to theft, mysterious disappearance, sickness, improper handling or Act of God. It is to be clearly understood that the sale manager and its representatives act only as a medium between the buyer and the seller. They are not responsible in any way for the failure on the part of the buyer and seller to live up to their obligations or for truth of any warranties or representation, express or implied. Neither does the sale manager assume any financial obligation to collect or enforce collection of monies between parties. Any legal action that may in exceptional cases be taken must be between the buyer and seller. This catalog has been prepared by the sale manager from pedigrees and information supplied by sources deemed reliable, however the sale manager will in no way guarantee the pedigree, percentage of the animals selling or data included in this catalog. Any exception taken between the buyer and the seller.

## **CONTRACT**

The above terms & conditions of sale shall constitute a contract between the buyer and seller of each animal and shall be equally binding upon both. Each sale or resale of an animal constitutes a separate transaction.

## **LIVESTOCK INSURANCE**

Please tell the sales clerk when you check out if you would like to insure your purchases, and they will record the necessary information. All purchases are the buyers' responsibility as soon as they are sold.



**Lot 1**

*Makayla*

**BKF RAZMATAZ 2225**

**1**

REG: 4756405 • DOB: 1-31-2022 • TATTOO: 2225 • CAT: 1A • SC: 35

PIE SENECA 7168  
TJS RAZMATAZ G001  
TJS PRIDE Y176

5L CRAFTSMAN 2393-13C  
JACOBSON SHEBA 9068  
RIDGE SHEBA 310-7064

RREDS SENECA 731C  
PIE RASPBERRY TUO 4041  
TJS BERRY CHERRY 8801  
LCC PRIDE K3914  
5L CRAFTSMAN 1134-150X  
5L MISS MATTIE 50-1293  
RIDGE RED JACK 5021  
MLK CRK SHEBA 310

All I can say is WOW. This bull is the kind all breeders want to produce. This bull has loads of muscle. His EPDs for yearling, ADG are in the top 4% for the breed and has a negative 1.0 Birth Weight. He is out of a cow that you want to save heifers. He will build you a herd. Razmataz calves are not easy to come up with. Dwight partnered with Westphal Red Angus on his herd sire and was that a wise decision. If you want a complete bull that will improve your herd then you need to bid here.

HB	GM	CED	BW	WW	YW	MILK	MARB	YG	REA
60	40	12	-0.9	76	129	27	0.44	0.15	0.17

**TO VIEW VIDEOS GO TO  
WWW.REDTIEEVENT.COM**



**Lot 2**

*Makayla*

**BKF RAZMATAZ 2203**

**2**

REG: 4756321 • DOB: 2-11-2022 • TATTOO: 2203 • CAT: 1A • SC: 34

PIE SENECA 7168  
TJS RAZMATAZ G001  
TJS PRIDE Y176

RED SSS OLY 554T  
VGW 554T- FLOWER 1203  
VGW 508-FLOWER 0829

RREDS SENECA 731C  
PIE RASPBERRY TUO 4041  
TJS BERRY CHERRY 8801  
LCC PRIDE K3914  
RED CROWFOOT OLE'S OSCAR  
RED SSS GOLD EDGE 77R  
VGW GAME PLAN 508  
VGW LOG-FLOWER 9508

HB	GM	CED	BW	WW	YW	MILK	MARB	YG	REA
53	13	10	-1.9	65	108	23	0.40	0.15	-0.09

This bulls dam produced the high selling bull last year and she reloaded with this Razmataz stud. His dam is 11 years old. Here is a chance to get Razmataz genetics packed with maternal longevity.

**BKF RAZMATAZ 2208**

**3**

REG: 4756349 • DOB: 1-30-2022 • TATTOO: 2208 • CAT: 1 A • SC: 37

PIE SENECA 7168  
TJS RAZMATAZ G001  
TJS PRIDE Y176

5L DYNOTRADE 587-112X  
BKF HAZY 1510  
VGW X580-HAZY 1396

RREDS SENECA 731C  
PIE RASPBERRY TUO 4041  
TJS BERRY CHERRY 8801  
LCC PRIDE K3914  
5L TRADESMAN 1715-6237  
5L MS DYNAMO 54-587  
MONTVUE S008 PACKER X580  
VGW M517-HAZY 0875

HB	GM	CED	BW	WW	YW	MILK	MARB	YG	REA
34	19	10	0.2	68	109	27	0.42	0.01	0.25

Another Razmataz son. Are you seeing a trend in these bulls putting the muscle and pounds where they belong. Here is a solid bull that will put pounds in your next set of calves.



**Lot 3**

*Makayla*



**Lot 4**

*Makayla*

**BKF FINISHED PRODUCT 2211**

**4**

REG: 4756355 • DOB:2-6-2022 • TATTOO: 2211 • CAT:1A • SC: 34.5

COLLIER FINAL PRODUCT B389  
COLLIER FINISHED PRODUCT  
COLLIER AMY B385

BIEBER RREDS TAKEOUT 305A  
BJR ELEANOR 603D  
LRF MS EXP A130

CONNEALY FINAL PRODUCT  
ANDRAS AMY B121  
HOOVER DAM  
ANDRAS AMY B121  
LSF TAKEOVER 9943W  
BIEBER FLOWER 361Y  
LSF JBOB EXPECTATION 6034S  
LRF ELEANORS JEWEL X122

HB	GM	CED	BW	WW	YW	MILK	MARB	YG	REA
69	33	11	-1.8	72	114	23	0.38	-0.00	0.42

This stylish bull dark red bull is one to look at. He is another curve bender. Are you seeing a trend in solid EPDs with heavy muscled bulls out of top shelf maternal cows.



**Lot 5**

*Makayla*

**BKF FINISH PRODUCT 2204**

**5**

REG: 4756333 • DOB:2-9-2022 • TATTOO: 2204 • CAT: 1A • SC: 37.5

COLLIER FINAL PRODUCT B389  
COLLIER FINISHED PRODUCT  
COLLIER AMY B385

BROWN BETTER ANSWER Z7257  
BROWN BETTER ANSWER Z7257  
BROWN MS P707 X7580

CONNEALY FINAL PRODUCT  
ANDRAS AMY B121  
HOOVER DAM  
ANDRAS AMY B121  
LCS X2  
BROWN MS MONU P7930  
BECKTON NEBULA P P707  
C-BAR & BROWN ABIGRACE T714

HB	GM	CED	BW	WW	YW	MILK	MARB	YG	REA
76	55	14	-2.6	61	105	18	0.45	0.15	0.06

This is a heifer bull. Negative 2.6 BW with a CED of 14. Accuracy of 50% you can rest assured the calving will be easy. This bull will also produce calves that will work on the grid. Another curve bender.



**BKF FINISHED PRODUCT 2217**

6

REG: 4756375 • DOB:2-06-2022 • TATTOO: 2217 • CAT: 1A • SC: 35

COLLIER FINAL PRODUCT B389  
COLLIER FINISHED PRODUCT  
COLLIER AMY B385

5L MTN SIGN 435-10Z  
JACOBSON GRETTA 8195  
JACOBSON GRETTA 3140

CONNEALY FINAL PRODUCT  
ANDRAS AMY B121  
HOOVER DAM  
ANDRAS AMY B121  
5L ADVOCATE 817-14W  
5L LAKOTA 1583-435  
5L ADVANTAGE 3267-221Y  
JACOBSON GRETTA 9058

HB	GM	CED	BW	WW	YW	MILK	MARB	YG	REA
31	66	14	-3.4	62	105	21	0.58	0.12	0.19

Another curve bender with a massive spread and in the top 6% for Gridmaster. These Finished Product Bulls keep checking the boxes in EPDs and they are structurally correct to provide longevity.

**BKF FINISHLINE 2233**

7

REG: 4756649 • DOB:3-13-2022 • TATTOO: 2233 • CAT:1 A • SC: 35

COLLIER FINISHED PRODUCT  
BKF FINISHLINE 2020  
VGW HD-HAZY 1527

BROWN AA PRESTIGIOUS B5153  
BKF STAR 1927  
BKF STAR 1620

COLLIER FINAL PRODUCT B389  
COLLIER AMY B385  
BIEBER HARD DRIVE Y120  
VGW RTR-HAZY 1162  
LSF TAKEOVER 9943W  
BROWN MS DESTINATION T7634  
VGW RIGHT KIND 3115  
VGW MS-STAR 1413

HB	GM	CED	BW	WW	YW	MILK	MARB	YG	REA
23	36	13	-1.2	64	103	16	0.38	-0.00	0.14

This dark cherry red bull matches the same trend as the other bulls. Neagitive BW EPD and over 100 yearling EPD The selection criteria for this sale is not easy to pass. The Finish Line herd sire is out of one of BKF's best cows. Don't miss this one.



**Lot 8**

**BKF FINISH LINE 2226**

**8**

REG: 4756407 • DOB: 3-23-2022 • TATTOO: 2226 • CAT: 1A • SC: 36.5

COLLIER FINISHED PRODUCT  
BKF FINISHLINE 2020  
VGW HD-HAZY 1527

3SCC DEFENSE E506  
C JACOBSON TJ 9138  
C JACOBSON TJ 7025

COLLIER FINAL PRODUCT B389  
COLLIER AMY B385  
BIEBER HARD DRIVE Y120  
VGW RTR-HAZY 1162  
5L DEFENDER 560-30Z  
BSKF RACHEL C412  
5L MTN SIGN 435-10Z  
2RJL TJ C741

HB	GM	CED	BW	WW	YW	MILK	MARB	YG	REA
49	54	16	-2.9	67	112	23	0.62	0.09	0.03

This moderate framed bull is another big spread curve bender. He is definitely a heifer bull that has Gridmaster capability.

**MKU ATOMIC K47S**

**9**

REG: 4729135 • DOB: 3-27-2022 • TATTOO: K47S • CAT: 1A • SC: 35

LSF SRR TYSON 3025A  
LSF BCF TYSON 9863G  
FEDDES BLOCKANA 472 A63

DAMAR REDEEMING C618  
BKF FIREFLY 1815  
BKF FIREFLY 1639

MUSHRUSH IMPRESSIVE CA U236  
LSF JIBA R5009 W9247  
BECKTON EPIC R397 K  
FEDDES BLOCKANA 472  
BROWN JYJ REDEMPTION Y1334  
BROWN MS CONQUEST Z7870  
VGW SMOKE SIGNAL 350  
XXX FIREFLY 660

HB	GM	CED	BW	WW	YW	MILK	MARB	YG	REA
62	32	13	-4.3	55	89	27	0.41	0.09	0.33

**BAR E 006H MR KING 2008**

**10**

REG: 4717425 • DOB: 2-2-2022 • TATTOO: 2008 • CAT: 1A • SC: 37

KJHT POWER TAKE OFF  
BARE 9131  
SST REDEMI Z2-B1

RED T-K RAPTOR 26E  
L83 HILDY 006H  
L83 ALL GIRL 20A

RED SOO LINE POWER EYE 161X  
SRA PAINTBUCKET  
BROWN JYJ REDEMPTION Y1334  
SST CHEYA X11-Z2  
RED YCLC MAMA'S BOY 556B  
RED T-K MISS 107C  
SIX MILE WIND CHILL 828W  
L83 PRAIRIE LASS 414

HB	GM	CED	BW	WW	YW	MILK	MARB	YG	REA
32	10	9	0.5	59	92	30	0.15	0.08	-0.01

Mr King is a grandson of PTO and Redemption. He also has some Canadian bloodlines like Red T-K Raptor 26E. Bar E showed the Dam successfully. He is full of muscle and will put pounds on the ground. The genetics behind this bull will give you confidence.



**Lot 9**





**BAR E 6378 MR STRONG 2205**

**11**

REG: 4717421 • DOB: 2-17-2022 • TATTOO: 2205 • CAT: 1A • SC: 32.5

KJHT POWER TAKE OFF  
L83 2STRONG 13F  
L83 MISS BRONTE 22A

MCPHEE TROPHY 36  
SILVEIRAS ROSIE 6378  
SILVEIRAS ROSIE 0355

RED SOO LINE POWER EYE 161X  
SRA PAINTBUCKET  
RED SIXMILE TRAVELOCITY 318X  
MESSMER BRONTE 031R  
BROWN COMMITMENT X7787  
ROYCE'S SENSATIONAL 14  
SILVEIRAS DURATION 7369  
SILVEIRAS JAZZY 7334

HB	GM	CED	BW	WW	YW	MILK	MARB	YG	REA
46	35	9	0.2	66	109	29	0.41	0.14	-0.08

This bull out of 6378 is a deep sided bold sprung bull that will produce heifers you will want to keep. This cow does an amazing job. She goes back to the amazing cow family Royce's Sensational 14. This bull has the extra power from L83 2 Strong 13F will improve your herd.

**BAR E 340A MR STRONG 2046**

**12**

REG: 4717431 • DOB: 3-4-2022 • TATTOO: 2046 • CAT: 1A • SC: 36

KJHT POWER TAKE OFF  
L83 2STRONG 13F  
L83 MISS BRONTE 22A

BROWN/BOLA REVELATION X1231  
OVER ALLY 340A  
OVER RAVISHING DEAL 540R

RED SOO LINE POWER EYE 161X  
SRA PAINTBUCKET  
RED SIXMILE TRAVELOCITY 318X  
MESSMER BRONTE 031R  
BROWN REVELATION P7021  
BECKTON LANA M666 JL  
RAVISHING LIGHTENING 812 692  
DMS MS RE-DEAL 4140

HB	GM	CED	BW	WW	YW	MILK	MARB	YG	REA
46	54	11	2.6	66	109	32	0.49	-0.04	0.36

If you want power and performance then this is your bull. He has an extreme amount of growth and production. If you sell your calves by the pound then this you will like Bar E 340A Mr Strong 2046. His Dam has a MPPA of 107.

**BAR E 2078Z MR STRONG 2033**

**13**

REG: 4717427 • DOB: 2-21-2022 • TATTOO: 2033 • CAT: 1A • SC: 35

KJHT POWER TAKE OFF  
L83 2STRONG 13F  
L83 MISS BRONTE 22A

RED COCKBURN RIBEYE 308U  
WCR MISS LAKE RE 2078Z  
RED TOWAW LAKIMA 76M

RED SOO LINE POWER EYE 161X  
SRA PAINTBUCKET  
RED SIXMILE TRAVELOCITY 318X  
MESSMER BRONTE 031R  
RED BAR-E-L RIBEYE 103R  
RED WILBAR CORA 443P  
RED TOWAW INDEED 104H  
RED TOWAW LAKIMA 26G

HB	GM	CED	BW	WW	YW	MILK	MARB	YG	REA
72	19	11	-1.2	46	67	26	0.47	0.11	-0.35

A dark red moderate bull out of L83 2 Strong 13F. This is a complete well balanced bull out of a cow that stayed around 11 years at Bar E. His negative 1.2 BW EPD and Low ME EPD of -1 make him a low maintenance low input bull. His daughters will easy keepers in dry years.



**Lot 14**

**RMI STOCKMARKET 2204**

**14**

REG:4806714 • DOB:2-27-2022 • TATTOO: 2204 • CAT: 3 • SC:

PIE STOCKMAN 4051  
BIEBER CL STOCKMARKET E119  
BIEBER CL ADELLE 475C

LSF SAGA 1040Y  
PIE LAKOTA 046  
ANDRAS FUSION R236  
BIEBER ADELLE 297Y

HB	GM	CED	BW	WW	YW	MILK	MARB	YG	REA
48	104	14	-2.6	65	105	22	0.96	0.18	0.27

**RMI ROLLIN DEEP 2209**

**15**

REG:4806710 • DOB:3-2-2022 • TATTOO: 2209 • CAT: 3 • SC:

BIEBER ROLLIN DEEP Y118  
MFRA ROLLIN DEEP S277  
MEAD MS PARADOX J841

BIEBER ROOSEVELT W384  
BIEBER TILLY 399W  
RED FINE LINE MULBERRY 26P  
PRLP MS PARADOX P785

HB	GM	CED	BW	WW	YW	MILK	MARB	YG	REA
55	52	11	-1.0	58	88	25	0.24	0.06	0.31



**Lot 15**



**RMI ROLLIN DEEP 2207**

**16**

REG: 4806706 • DOB:3-1-2022 • TATTOO: 2207 • CAT: 3 • SC:

BROWN JYJ REDEMPTION Y1334  
 BROWN AA RECLAMATION D6580  
 BROWN MS PRIDE Y7731

BECKTON NEBULA P P707  
 JYJ MS JOLENE W16  
 MCPHEE PACIFIC PRIDE 4127  
 BROWN MS BIG SKY U7877

HB	GM	CED	BW	WW	YW	MILK	MARB	YG	REA
53	95	14	-1.4	68	106	21	0.61	0.12	0.30



**RMI ONE EIGHTY 2208**

**17**

REG: 4806708 • DOB:2-22-2022 • TATTOO: 2208 • CAT: 3 • SC:

BIEBER ROLLIN DEEP Y118  
 MFRA ROLLIN DEEP S277  
 MEAD MS PARADOX J841

BIEBER ROOSEVELT W384  
 BIEBER TILLY 399W  
 RED FINE LINE MULBERRY 26P  
 PRLP MS PARADOX P785

HB	GM	CED	BW	WW	YW	MILK	MARB	YG	REA
55	52	11	-1.0	58	88	25	0.24	0.06	0.31



**RMI ROLLIN DEEP 2203**

**18**

REG: 4806700 • DOB:4-1-2022 • TATTOO: 2203 • CAT: 3 • SC:

BIEBER ROLLIN DEEP Y118  
 MFRA ROLLIN DEEP S277  
 MEAD MS PARADOX J841

BIEBER ROOSEVELT W384  
 BIEBER TILLY 399W  
 RED FINE LINE MULBERRY 26P  
 PRLP MS PARADOX P785

HB	GM	CED	BW	WW	YW	MILK	MARB	YG	REA
55	52	11	-1.0	58	88	25	0.24	0.06	0.31



**Lot 20**

**RMI ROLLIN DEEP 2202**

**19**

REG:4806698 • DOB:02-28-2022 • TATTOO: 2202 • CAT: 3 • SC:

BIEBER ROLLIN DEEP Y118  
 MFRA ROLLIN DEEP S277  
 MEAD MS PARADOX J841

BIEBER ROOSEVELT W384  
 BIEBER TILLY 399W  
 RED FINE LINE MULBERRY 26P  
 PRLP MS PARADOX P785

HB	GM	CED	BW	WW	YW	MILK	MARB	YG	REA
55	52	11	-1.0	58	88	25	0.24	0.06	0.31

**RMI 2205**

**20**

REG: 4806702 • DOB:2-27-2022 • TATTOO: 2205 • CAT: 3 • SC:

BROWN JYJ REDEMPTION Y1334  
 BROWN AA RECLAMATION D6580  
 BROWN MS PRIDE Y7731

BECKTON NEBULA P P707  
 JYJ MS JOLENE W16  
 MCPHEE PACIFIC PRIDE 4127  
 BROWN MS BIG SKY U7877

HB	GM	CED	BW	WW	YW	MILK	MARB	YG	REA
53	95	14	-1.4	68	106	21	0.61	0.12	0.30

**RMI RECLAMATION 2210**

**21**

REG: 4806712 • DOB:2-27-2022 • TATTOO: 2210 • CAT: 3 • SC:

BROWN JYJ REDEMPTION Y1334  
 BROWN AA RECLAMATION D6580  
 BROWN MS PRIDE Y7731

BECKTON NEBULA P P707  
 JYJ MS JOLENE W16  
 MCPHEE PACIFIC PRIDE 4127  
 BROWN MS BIG SKY U7877

HB	GM	CED	BW	WW	YW	MILK	MARB	YG	REA
53	95	14	-1.4	68	106	21	0.61	0.12	0.30

**RMI RECLAMATION 2206**

**22**

REG: 4806704 • DOB:3-2-2022 • TATTOO: 2206 • CAT: 3 • SC:

BROWN JYJ REDEMPTION Y1334  
 BROWN AA RECLAMATION D6580  
 BROWN MS PRIDE Y7731

BECKTON NEBULA P P707  
 JYJ MS JOLENE W16  
 MCPHEE PACIFIC PRIDE 4127  
 BROWN MS BIG SKY U7877

HB	GM	CED	BW	WW	YW	MILK	MARB	YG	REA
53	95	14	-1.4	68	106	21	0.61	0.12	0.30



**EEC PAYWEIGHT 35G 59K**

**23**

REG: 4612757 • DOB: 5-16-2022 • TATTOO: 59K • CAT: 1A • SC:

BASIN PAYWEIGHT 1682  
EEC PAYWEIGHT 35G  
EEC ROSANNA D24

V A R RESERVE 1111  
EEC MAEVE E13  
EEC MAEVE B07

BASIN PAYWEIGHT 006S  
21AR O LASS 7017  
BIEBER HARD DRIVE Y120  
BASIN ROSE 710P  
B/R NEW DAY 454  
SANDPOINT BLACKBIRD 8809  
LCOC DENIRO A027Z  
DAMAR QUEEN X027

HB	GM	CED	BW	WW	YW	MILK	MARB	YG	REA
86	77	14	-1.9	76	129	23	0.60	0.14	0.36

**BW: 74 ADJ WW: 778 ADJ YW: 1357**

A True Outcross Red-hided registered Red Angus bull. Check out his pedigree, over 60% Black Angus. We like everything about this bull. Heifer bull with lots of growth. Excellent carcass; Super disposition; Phenotypically correct; and his dam makes the best calves! Selling 1/2 interest and full possession.

**EEC PAYWEIGHT 35G 24K**

**24**

REG: 4612745 • DOB: 4-13-2022 • TATTOO: 24K • CAT: 1A • SC:

SRN HI DEE 7543  
EEC PAYWEIGHT 35G  
EEC ROSANNA D24

V A R RESERVE 1111  
EEC CHA CHA E20  
EEC ADELAIDE X43T

BASIN PAYWEIGHT 006S  
21AR O LASS 7017  
BIEBER HARD DRIVE Y120  
BASIN ROSE 710P  
B/R NEW DAY 454  
SANDPOINT BLACKBIRD 8809  
BECKTON NEBULA L P093  
SRN HI DEE 7543

HB	GM	CED	BW	WW	YW	MILK	MARB	YG	REA
71	59	15	-5.0	63	102	21	0.59	0.12	0.32

**BW: 82 ADJ WW: 764 ADJ YW: 1249**

Red-hided registered Red Angus bull with 60% of his pedigree originating from proven Black Angus sire lines. Basin PayWeight 1685 and VAR Reserve 1111. Heifer Bull. Good feet, lots of style. Quiet. Beautiful Dam. Outcross to most Red Angus cattle. Selling 1/2 interest and full possession.





**EEC RESOURCE 26K**

**25**

REG: 4612737 • DOB: 4-16-2022 • TATTOO: 26K • CAT: 1A • SC:

S A V RESOURCE 1441  
EEC RESOURCE 23G  
EEC ELEANORE B27

K C F BENNETT ABSOLUTE  
EEC MERRIWEATHER D13  
EEC GRACE X54T

ITO 707 OF IDEAL 3407 7075  
S A V BLACKCAP MAY 4136  
LCOC DENIRO A027Z  
SRN ELEANOR 7021  
S A V FINAL ANSWER 0035  
THOMAS MISS LUCY 5152  
LCOC ROMERO A007T  
SRN HI DEE 7549

HB	GM	CED	BW	WW	YW	MILK	MARB	YG	REA
61	41	15	-3.1	66	108	23	0.46	0.09	0.35

**BW: 79 ADJ WW: 716 ADJ YW: 1144**

A Red-hided registered Red Angus bull. 50% of his pedigree is made up of great Black Angus sires. SAV Resource 1441 and KCF Bennett Absolute have both made positive lasting impacts in the Black Angus breed. Get these proven sires in a red package and reap the benefits of this unique bull.

**EEC PROFITBUILDER 33K**

**26**

REG: 4612885 • DOB: 4-19-2022 • TATTOO: 33K • CAT: 1A • SC:

LSF TAKEOVER 9943W  
H2R PROFITBUILDER B403  
BROWN MS P707 Y6674

SCHULER SILVER BULLET 4604P  
SRN TYRA 7155  
WPRA HR TYRA 002

HXC CONQUEST 4405P  
LSF WIDELoad R5014 U8061  
BECKTON NEBULA P P707  
BROWN MS MISSION STMT T6963  
BECKTON LANCER F442 T  
SOR DUCHESS GROB 2052M  
HOLDEN HI ROLLER 8106  
WPRA TYRA 801

HB	GM	CED	BW	WW	YW	MILK	MARB	YG	REA
75	63	13	-2.9	67	104	25	0.70	0.03	0.38

**BW: 82 ADJ WW: 777 ADJ YW: 1222**

ProfitBuilder B403 consistently sires some of the best-looking bulls we have seen. This heifer bull will sire calves you'll be happy to own and proud to sell. Great carcass, growth, disposition, feet, and "looks". Selling 1/2 interest and full possession.

**EEC LOCK STK & BRL 36K**

**27**

REG: 4612841 • DOB: 4-21-2022 • TATTOO: 36K • CAT: 2 • SC:

EEC ABSOLUTE 160 D648  
EEC LOCK STOCK & BARREL 37G  
EEC ADDIE E33

EEC DEFENDER F806  
EEC MARCIE H16  
EEC EVANGALINE F33

EEC ABSOLUTE A160B  
BASIN ROSE 710P  
EEC HOOVER DAM A165B  
EEC ADELAIDE A12  
5L DEFENDER 560-30Z  
EEC TONI D06  
BIEBER CL SPARTACUS C627  
EEC EVANGELINE C35

HB	GM	CED	BW	WW	YW	MILK	MARB	YG	REA
38	55	15	-4.3	64	101	24	0.83	0.02	0.28

**BW: 73 ADJ WW: 734 ADJ YW: 1290**

Absolutely stunning looking bull! Super Performance, Super Disposition, Super Dam! He has a spot of white ahead of his navel causing him to be a category 2 registered Red Angus bull.

# OFFERING HALTER BROKE HEIFERS FOR YOUR NEXT SHOW PROJECT



**Lot 29**

## BKF TABITHA 2301

28

REG: 4811959 • DOB: 4-3-2023 • TATTOO: 2301 • CAT: 1A

COLLIER FINISHED PRODUCT  
BKF FINISHLINE 2020  
VGW HD-HAZY 1527

LSF JOURNEY 1169Y  
VGW JO-TABITHA 1465  
VGW 262-TABITHA 0534

COLLIER FINAL PRODUCT B389  
COLLIER AMY B385  
BIEBER HARD DRIVE Y120  
VGW RTR-HAZY 1162  
LSF VENTURE 7062T  
LSF COVER GIRL LA414 T7143  
LONEROCK GOLDSTRIKE 262  
VGW MT TABITHA 9633

HB	GM	CED	BW	WW	YW	MILK	MARB	YG	REA
75	33	11	-2.2	56	89	25	0.48	0.08	-0.02

This heifer as had a lot of admirers this summer. We decided to share one of our best heifers with our customers. Letting her go is not easy. She comes from a long line of quality females on top and bottom side. She has excellent well balanced EPDs and will produce very maternal females. This is a heifer you can build a program around. BKF Tabitha is a Finish line heifer you can breed to anything and get a great one.

## BARE H022 MS AMANDA L05

29

REG: 4783647 • DOB: 2-10-2023 • TATTOO: L05 • CAT: 1A

ANDRAS FUSION R236  
BIEBER CL ATOMIC C218  
BIEBER DATELINE 308Y

MUSHRUSH DEFENSE E181  
BARE E29 MS AMANDA H022  
MANN MS CHARGER 351 729

ANDRAS IN FOCUS B175  
ANDRAS BELLE B167  
HUST CHIEF SEQUOYA R336  
BASIN ROSE 7127  
5L DEFENDER 560-30Z  
MUSHRUSH LOGA NK U027  
MANN CHARGER 800 51A  
MANN MS CASH 801 351

HB	GM	CED	BW	WW	YW	MILK	MARB	YG	REA
20	48	13	-1.9	73	124	28	0.51	0.07	0.19

Another heifer that is hard to let go. This Bieber CL Atomic C218 daughter is also out of first calf heifer that is out of 5L Defender and a full brother to Mann Red Box. After seeing what Atomic calves look like it was an easy decision to breed this cow that way. She is everything I hoped for. How big of an EPD spread do you want with a -1.9 birth and 124 yearling. This heifer is a curve bender that looks awesome. Its not often you get the best of both worlds in Genotype and Phenotype.

# REGISTERED FALL HEIFERS SELLING CHOICE IN GROUPS OF 2

## BKF MOON-CHRSS 2272

**30**

REG: 4811939 • DOB: 9-1-2022 • TATTOO: 2272 • CAT: 1A

LJC MERLIN 937Z  
KCC EXCELLENCE 139-774  
139 1KCC

BROWN AA PRESTIGIOUS B5153  
BKF MOON-CHRSS 1871  
VGW MOON-CHRSS 1325

LJC MERLIN T179  
TR CARRIE WT937  
SCHULER ENVY 7342T  
KCC MISS BV 2105-528  
LSF TAKEOVER 9943W  
BROWN MS DESTINATION T7634  
RED CROWFOOT MOONSHINE 8081U  
VGW PAT CHRSS 08100

HB	GM	CED	BW	WW	YW	MILK	MARB	YG	REA
37	41	16	-3.7	62	101	22	0.34	-0.05	0.31

## BKF COLLEEN 2267

**31**

REG: 4811927 • DOB: 9-10-2022 • TATTOO: 2267 • CAT: 1A

LJC MERLIN 937Z  
KCC EXCELLENCE 139-774  
139 1KCC

BROWN AA SENSATIONAL B5147  
BKF COLLEEN 1715  
VGW MS-COLLEEN 1421

LJC MERLIN T179  
TR CARRIE WT937  
SCHULER ENVY 7342T  
KCC MISS BV 2105-528  
LSF TAKEOVER 9943W  
BROWN MS DESTINATION RED  
CROWFOOT MOONSHINE  
LAUBACH COLLEN EN 0094

HB	GM	CED	BW	WW	YW	MILK	MARB	YG	REA
39	33	17	-6.0	49	79	26	0.40	-0.05	0.14

## BKF FIREFLY 2264

**32**

REG: 4811915 • DOB: 9-8-2022 • TATTOO: 2264 • CAT: 1A

PIE SENECA 7168  
TJS RAZMATAZ G001  
TJS PRIDE Y176

VGW SMOKE SIGNAL 350  
BKF FIREFLY 1639  
XXX FIREFLY 660

RREDS SENECA 731C  
PIE RASPBERRY TUO 4041  
TJS BERRY CHERRY 8801  
LCC PRIDE K3914  
5L SMOKE SIGNAL 756-176V  
VGW PR-DORY 0838  
BASIN GOLD 6C  
XXX FIREFLY 367 HC

HB	GM	CED	BW	WW	YW	MILK	MARB	YG	REA
38	17	9	0.5	67	109	23	0.38	0.07	0.08

## BKF SUNBURST 2266

**33**

REG: 4811921 • DOB: 9-7-2022 • TATTOO: 2266 • CAT: 1A

LJC MERLIN 937Z  
KCC EXCELLENCE 139-774  
139 1KCC

VGW SMOKE SIGNAL 350  
BKF SUNBURST 1667  
BKF SUNBURST 116

LJC MERLIN T179  
TR CARRIE WT937  
SCHULER ENVY 7342T  
KCC MISS BV 2105-528  
5L SMOKE SIGNAL 756-176V  
VGW PR-DORY 0838  
TRADESMAN 1715-6237  
5L SUNBURST X004-2383

HB	GM	CED	BW	WW	YW	MILK	MARB	YG	REA
49	29	15	-3.9	51	86	24	0.37	-0.01	0.12

TO VIEW VIDEOS GO TO  
[WWW.REDTIEEVENT.COM](http://WWW.REDTIEEVENT.COM)



# LOT 34-73 SPRING OPEN HEIFERS



## Meyer Family Farms Brunswick, Missouri

Randy Meyer • 660.788.2066  
Steven Meyer • 660.998.3044

Outstanding set of Red Angus open heifers weighing in at average of 650 lbs. These heifers are out of a outstanding set of Red Angus cows that are great mothers. Not only will they catch your eye sale day they come with the maternal & growth traits that you will like in your herd.

Heifers will sell in smaller groups and be broke into groups on sale day.

## RED ANGUS MARKETING PROGRAMS

### How to Enroll in FCCP and AA

1. The producer contacts the Red Angus Association of America at (940) 226-4762 and answers a short supplier enrollment questionnaire over the phone. RAAA staff will ask general management, animal identification and breeding questions. If needed, the producer may be asked to supply additional documentation on breeding such as semen receipt, lease agreements or information on purchased females.
2. After all documentation is recorded, staff will ship the tags directly to the producer who must tag the calves before they leave the ranch of origin – birth, branding, preconditioning, weaning or before loading on the semi.
3. The producer will receive a customer enrollment agreement to fill out and return to RAAA with a copy of their calving records.
4. Staff will issue the USDA-approved Certificate of Compliance upon receiving the customer enrollment agreement and calving record.

**FCCP Tags**  
99¢ each

**Allied Access Tags**  
99¢ each

**EID Combo Sets**  
\$3 each

### Feeder Calf Certification Program

- Traceability to at least 50% Red Angus genetics
- Source verified to ranch of origin
- Group age verified

Eligible for Choice+ and G.O. Red Grids  
No enrollment fee, 99¢/tag  
840-compliant EIDs available upon request



GENETICS  
AGE  
SOURCE

- Source verified to ranch of origin
- Group age verified

Not eligible for Choice+ or G.O. Red Grids  
No enrollment fee, 99¢/tag  
840-compliant EIDs available upon request



AGE  
SOURCE

**The Red Angus Feeder Calf Certification Program is the first step in differentiating your cattle to buyers, feedlots and packers.**

Experience industry-leading return on investment for just the cost of an ear tag – with no enrollment fees. The Red Angus Association of America Marketing Team offers assistance to Red Angus bull customers at no charge.

Visit [RedAngus.org](http://RedAngus.org) for contact information.

### Red Angus Marketing

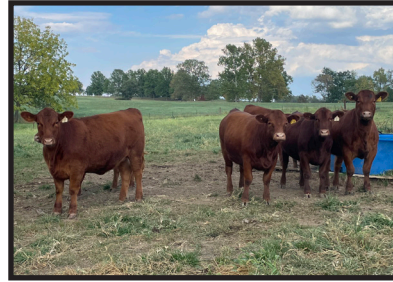
- FCCP (Yellow Tag)
- Allied Access (Green Tag)
- Premium Red Baldy (White Tag)
- American Red (Blue Tag)
- Tyson's Choice+ Grid
- Greater Omaha's G.O. Red Grid
- Stockyard
- Feedlot Partners
- Red Angus FeederFax
- Red Angus FeMail
- Calendar of Events

**RED ANGUS**

RANCH TESTED. RANCHER TRUSTED.

[RedAngus.org](http://RedAngus.org) • (940) 226-4762

# LOT 74-86 FALL OPEN HEIFERS



## Mosby Cattle Co. Silex, Missouri

Brad Mosby  
636.262.5356

Pelvic measured and tract scored, pre-breeding vaccinations, leptoed and wormed. Open Ready to Bred.

Feddes, Hueftle, and Bieber Genetics

Heifers will sell in smaller groups and be broke into groups on sale day.

# LOT 87-89 FALL OPEN HEIFERS

## Bar E Ranch Haskell, Oklahoma

Roger Erickson  
918.691.2702



3 Top end Red Baldie heifers. 800# plus.  
Complete vaccination program.  
Tract scored and pelvic measured.

# LOT 90-91 FALL OPEN HEIFERS

## Brickhouse Farms Tina, Missouri

Dwight Harper  
660.542.4033



Complete vaccination program.  
Tract scored and pelvic measured.

# LOT 92-93 SPRING BRED HEIFERS



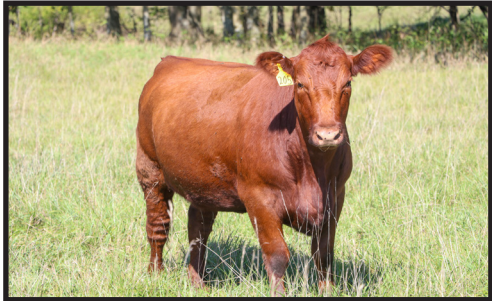
## Kluesner Family Cattle Bloomington, Wisconsin

Tony Kluesner • 608.379.3113  
Bart Kluesner • 608.379.4136

Commercial Bred Red Angus Heifers.  
Ultra Sound Preg Checked on 6-5-23  
Lot 180 • Tag 271 • Due Feb. 1, 2024  
Lot 181 • Tag 232 • Due Feb. 7, 2024

Bred to: BKF Right Kind 2142 Reg #4541209

# LOT 94-112 SPRING BRED HEIFERS



## Meyer Family Farms Brunswick, Missouri

Randy Meyer • 660.788.2066  
Steven Meyer • 660.998.3044



Out of the top genetics from Meyer Family Farms. This set of females are ones that you will want to keep around and keep daughters out of.  
Due to start calving 2-10-24

Heifers will sell in smaller groups and be broke into groups on sale day.  
Ultra Sound information will be available.

# LEM STOCKMARKET 2021 ET AI SIRE TO LOT 113-138



## LOT 113-118 SPRING BRED HEIFERS

**Mark Hatfield**  
**Kyle Lynn**  
**Salisbury, Missouri**

Mark Hatfield • 660.676.6030  
Kyle Lynn • 816.681.3614



Commercial Bred Red Angus Heifers.  
AI Bred to LEM STOCKMARKET 2021 ET • REG # 4659209  
Due to calve on Feb. 12, 2024

# LOT 119-128 FALL OPEN HEIFERS

**Brickhouse Farms**  
**Tina, Missouri**

Dwight Harper  
660.542.4033

Summered in Eastern Oklahoma because of the Missouri drought.  
Due to calve Feb. 15, 2024 with a 60 day calving window.  
AI Bred to LEM STOCKMARKET 2021 ET • REG # 4659209  
Calving Ease Clean Up Bulls

# LOT 129-138 SPRING BRED HEIFERS

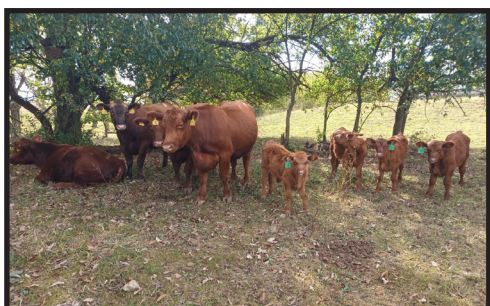
**Hart Brothers**  
**Brunswick, Missouri**

Brian Hart • 660.815.2222  
Lucas Hart • 660.414.5925



Commercial Bred Red Angus Heifers.  
AI Bred to LEM STOCKMARKET 2021 ET • REG # 4659209 • Clean up bull ANDRAS MADISON K068  
Due to calve on Feb. 15, 2024 • Ultra Sound Preg Checked and breeding vaccinations.

# LOT 139-142 FALL HEIFER PAIRS



**Twin Hill Stock Farm**  
**Silex, Missouri**

Terry Mudd • 636.262.9428

Calved in 4 Days unassisted.  
Calves are out of Rebel.

# LOT 143-147 FALL PAIRS

## Meyer Family Farms Brunswick, Missouri

Randy Meyer • 660.788.2066  
Steven Meyer • 660.998. 3044



Outstanding set of young females raised on fescue!

Pairs will sell in smaller groups and be broke into groups on sale day.  
With calving information.

# LOT 148-200 SPRING BRED COWS

## Meyer Family Farms Brunswick, Missouri

Randy Meyer • 660.788.2066  
Steven Meyer • 660.998. 3044

Proven 3- 6 year old mothers that have worked hard for Meyer Family Farms over the years! Keeping back top replacements each year Randy worked hard to only keep around cows that did there job as mothers and these cows sure did, rasing calves that would wean calves weighing 650+ pounds each year they earned there keep.

Cows are out of: Leland Firepower, RA Brown, Redemption, Mulberry, Feddes Silverbow  
Cows are Bred to Sons of: Rollin Deep, Redemption, Complete

Cows will sell in smaller groups and be broke into groups on sale day.  
Ultra Sound information will be available.



# *Randy Meyer*

## **HERD DISPERSAL**

*Part of Meyer Family Farms*

---

**YEARS OF TOP QUALITY GENETICS STRAIGHT  
OFF THE FARM FROM THE HEART OF MISSOURI**



**CHECK OUT CONSIGNMENTS  
AT THE RED TIE EVENT**

*Saturday, November 4, 2023  
3C Event Center • Hale, Missouri*

---

**RANDY MEYER • 660.788.2066**

Dusk to Dawn Marketing  
1071 County Road 1231  
Huntsville, MO 65259

VIDEOS AVAILABLE AT  
**REDTIEEVENT.COM**



*The*  
**RED TIE**  
*Event*

**NOVEMBER 4, 2023**

**3C EVENT CENTER  
& AGRI COMPLEX**

**HALE, MISSOURI – 1:00PM**